



# GAT MONTHLY MEMBERSHIP PROGRESS REPORT

Results as of: 4/30/2022

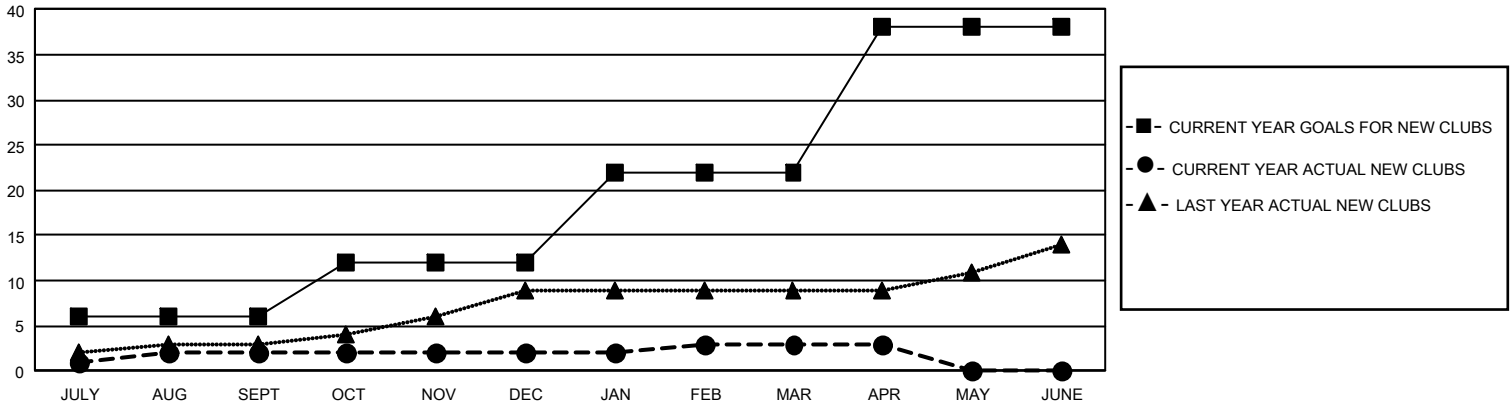
## GMT Constitutional Area 1, Group D

REPORT DOES NOT INCLUDE CLUBS IN UNDISTRICTED AREAS.

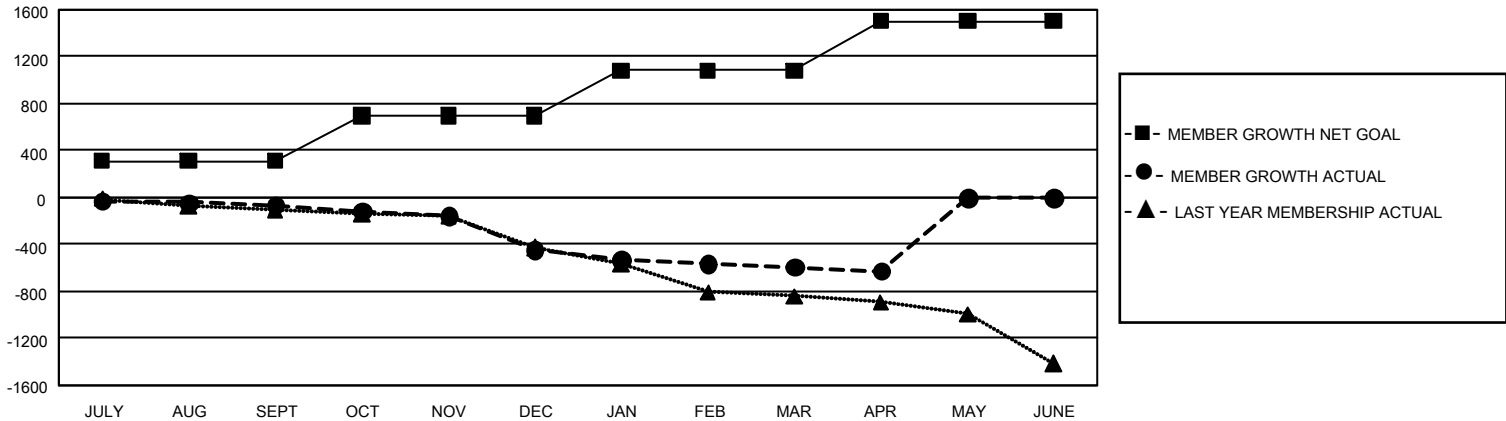
Clubs			
RESULTS FOR 2021-2022			
QUARTER	NEW CLUB GOAL	NEW CLUBS	DROPPED CLUBS
JULY/AUG/SEPT	18	2	15
OCT/NOV/DEC	18	0	5
JAN/FEB/MAR	30	1	10
APR/MAY/JUNE	48	0	1

Members			
RESULTS FOR 2021-2022			
QUARTER	MEMBER GROWTH NET GOAL	MEMBER GROWTH ACTUAL	DROPPED MEMBERS ACTUAL (including transfers)
JULY/AUG/SEPT	309	705	641
OCT/NOV/DEC	389	520	866
JAN/FEB/MAR	384	589	668
APR/MAY/JUNE	424	163	188

GOALS AND ACTUAL NEW CLUBS CUMULATIVE



GOALS AND ACTUAL MEMBERS CUMULATIVE



DROPPED CLUBS: 31	548 CLUBS OF 1,071 ADDED 1 OR MORE NEW MEMBERS	<u>GENDER DISTRIBUTION</u>	
		MALE	17,513 (67.34%)
<u>DROPPED MEMBERS</u>		FEMALE	8,493 (32.66%)
DECEASED	538	NON BINARY	0 (0.00%)
CLUB CANCELLED	187	PREFER NOT TO ANSWER	2 (0.01%)
OTHER	1,636	TOTAL FAMILY UNIT MEMBERS	5,209
<b>TOTAL</b>	<b>2,361</b>	FAMILY MEMBERS PAYING HALF DUES	2,679

[CLICK HERE FOR CUMULATIVE MEMBERSHIP DATA](#)